

BOOK 2

I hereby certify that the above diagram of the VIIIth Guide Meridian West of the 4th Principal Meridian between the 36th and 37th Townships South is correct as shown by Anna & William H. Pierce under their Contract dated May 2^d 1862 is in strict conformity to the original approved Field Notes of the Survey.

Surveyor General's Office }
 Denver City July 1st 1862 }

Francis H. Hulse
 Surveyor General Colorado & Utah



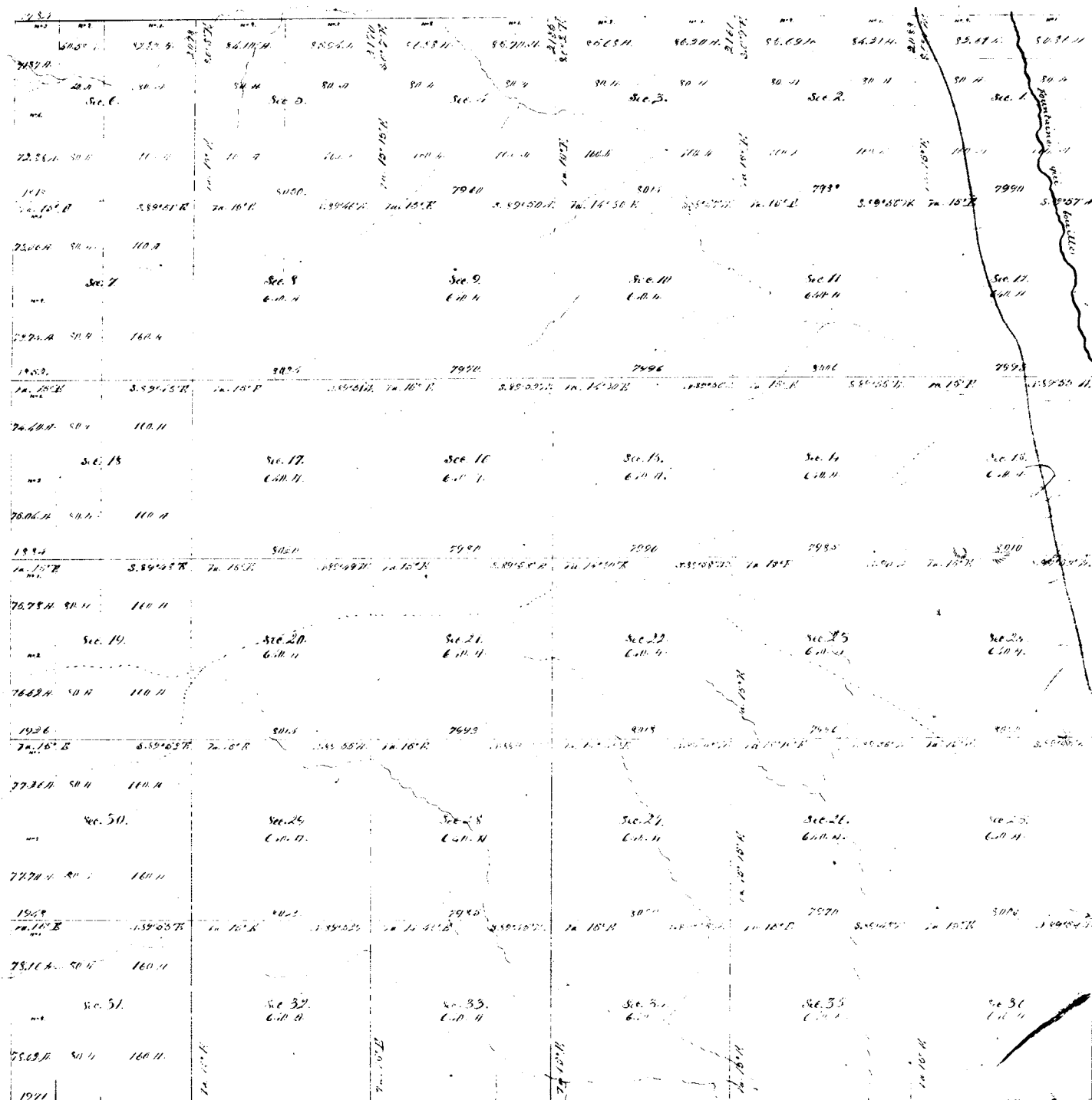
I hereby certify this Diagram of Exterior Lines as Surveyed by John & Wm H. Foxe under their Contract of May 31st 1862 to be correctly extracted from the Original Approved Field Notes now on file in this Office

Surveyor General's Office
Denver Co. Ty. July 10th 1862

Francis M. Case
Supt. Genl. Col. & T. Co.

18 65
T.XVIII.S.R.LXV.W.

BOOK 5



Tracts Designated	By whom Surveyed	date of Certificate	Amount of Survey	When Surveyed
County, Line	Robert M. Smith	May 31 st 1863	At 100 Acres	1863
Subdivision	Wm. A. Kelly	May 30 1866	50 7 1/2	July 1866

The above map of Section 18, Township 18 North, Range 36 East of the 1st P.M. and Meridian in Colorado, is strictly conformable to the full title of the survey, and is a plan thereof, which have been examined and approved.

Surveyor General's Office
Denver Sep 15th 1866

J. D. M. P. R.
Gov. Genl

1011

UNITED STATES DEPARTMENT OF THE INTERIOR

PAGE 1

BUREAU OF LAND MANAGEMENT

COLORADO

RECTANGULAR SURVEY INDEX

PRINTED: 02/24/76

BOUNDARY	TOWNSHIP 10 VOLUME	SOUTH RANGE 65		WEST		SURVEY	CERTIFICATE	TYPE	CONTRACT	ISSUED ON	-SIXTH PRIN MER SURVEY		SURVEYOR OR REMARKS
		FROM	TO	FROM	TO						YEAR	APPROVED	
NORTH	RC	253	254	259	259			ORG	6	05/31/1862	1862		J PIERCE
NORTH	RD	241	242	259	262	326	332	ORG		05/31/1862	1862	07/09/1862	M PIERCE
SOUTH	RC	253	254	261	262			ORG	6	05/31/1862	1862		J PIERCE
SOUTH	RD	241	242	252	255	326	332	ORG		05/31/1862	1862	07/09/1862	M PIERCE
EAST	RC	253	254	259	262			ORG	6	05/31/1862	1862		J PIERCE
EAST	RU	1	3	4	11	317	320	RES		05/25/1866	1866	09/14/1866	M ASHLEY
EAST	RU	1	3	12	12	317	320	RES		05/25/1866	1866	09/14/1866	M ASHLEY
WEST	RD	241	242	252	252	326	332	ORG		05/31/1862	1862	07/09/1862	M PIERCE
WEST	RD	241	242	256	259	326	332	ORG		05/31/1862	1862	07/09/1862	M PIERCE
WEST	RO030	A	E	12	12	67	71	ORG		01/06/1874	1874	01/16/1874	T C WETMORE
SUBDIVISION	RU	1	3	3	5	317	320	ORG		05/25/1866	1866	09/14/1866	M ASHLEY
SUBDIVISION	RU	1	3	11	44	317	320	ORG		05/25/1866	1866	09/14/1866	M ASHLEY

Field Notes of the
Survey of the 8th Guide
Meridian West of the
6th Principal Meridian
(from the 3rd Standard
Parallel South to the 4th
Standard Parallel South)
between Secs 31 + 36 T₁ 20 S
R₁ 64 + 65 W. 6th P.M.

Names & Duties of the
Survey Party for the
Standard Lines
John Pierce } Comptroller

W. H. Pierce }
Frederick J. Ebert }
George A. Billings } Chainmen
Harrison O. Ashley }

Caleb S. Burdett }
Duncan Campbell } Cornermen

Bedwood Fisher } Flagman

Eighth Guide Meridian

I begin at the corner of Sections
1 and 6 of Township 16 South
Ranges 8⁴ and 63 West and Section
31 and 36 of Township 15 South
Ranges 6⁴ and 63 West and run
South on a true line
Variation 14° 43' East

- 29 Dry stream Course South West
40 Set a post with mound and chained
stake for quarter sec. corner
80 Set cottonwood post with mound
and chained stake for corner to
Sections 1, 6, 7 and 12
Band 3rd rate

- 40 Set post with mound and chained
stake for quarter sec. cor.
80 Set cottonwood post with mound and
chained stake for corner to sections
7, 12, 13 and 18.
Band 3rd rate

170.
Eight Guide chumian

48. Set cottonwood post with mound and chained stake for $\frac{1}{4}$ sec. cor.

81. Set a post with mound and chained stake for corner to sections 7, 12, 13 and 18
Dry prairie Poor grass

40. Set post with mound and chained stake for $\frac{1}{4}$ sec. cor.

80. Set a post with mound and chained stake for corner to sections 13, 18, 19 and 24.
Dry prairie Poor grass

19 & 24
40. Set post with mound and chained stake for $\frac{1}{4}$ sec. cor.

80. Set a post with mound and chained stake for corner to sections 19, 24, 25 and 30
Land 3rd rate
June 9th 1862

257
Eight Guide chumian

25 & 30
40. Set a cottonwood post with mound and chained stake for $\frac{1}{4}$ sec. corner

80. Set a post with mound and chained stake for corner to sections 25, 30, 31 and 36 Land 3rd rate

31 & 36
40. Set a post with mound and chained stake for $\frac{1}{4}$ sec. corner

80. Set a post with mound and chained stake for corner to township 17 and 18 South Ranges 64 and 65
Enter bottom of Fountain qui bound Bluff 50 ft. high Course Suth 15° East Variation 13° East #

20. Road to Pueblo Course South 10° East

40. Set cottonwood post with mound & chained stake for $\frac{1}{4}$ sec. corner

48. High Course South 30° West
62.50 Enter lower bottom of Fountain qui bound
70. Left bank of Fountain qui bound to the wide Course South East

Eighth Guide Meridian

- 80.00 Set a post with mound & chained stake at the corner of sections 1, 6, 7 and 12
Land 2nd rate
- 40.00 Set a post with mound and chained stake for $\frac{1}{4}$ sec. cor. Creek bottom Timbered
- 78.50 Set post with mound and chained stake as a reference corner for sections 7, 12, 13 and 18
Corner in the creek
- 78.70 Right-bank of the Fontaine qui bouit. Course South
Land 1st rate
- 40.00 Set a post with mound & chained stake for $\frac{1}{4}$ sec. cor.
- 80.00 Set a post with mound & chained stake for corner to sections 13, 18, 19 and 24
Land 2nd rate

Eighth Guide Meridian

40. Set a post with mound and chained stake for $\frac{1}{4}$ sec. corner
80. Set a post with mound and chained stake for corner to sections 19, 24, 25 and 30
Land 2nd rate
40. Set a post with mound and chained stake for $\frac{1}{4}$ section corner
At foot of bluff 60 ft high
About 30 chns. from creek
80. Set a post with mound and chained stake for corner to sections 23, 30, 31 and 36
Land 2nd rate
40. Set a post with mound and chained stake for $\frac{1}{4}$ sec. corner
80. Set a post with mound and chained stake for corner to Sectionships 18 and 19 South
Range 64 and 65 West. The line

Eighth Guide Meridian

in this township lies in the
bottom of the Fountain qui Saut
Creek 2nd rate
Location 14° 40' East

40. Set a post with mound and
chained stake for $\frac{1}{4}$ sec. corner

80. Set a post with mound and
chained stake for corner to
Sections 16, 7 and 12
Land 2nd rate

40. Set a post with mound and
chained stake for $\frac{1}{4}$ sec. corner

80. Set a post with mound &
chained stake for corner
to sections 7, 2, 13 and 14
Land 1st rate

40. Set a post with mound
chained stake for $\frac{1}{4}$ section
corner

Eighth Guide Meridian

45. Right Bank of the Fountain qui Saut
Creek South

80. Set cottonwood post with mound
and chained stake for corner to
Sections 13, 18, 19 and 24

Land 1st rate
June 10th 1862

2. Right Bank of creek

40. Set a post with mound and
chained stake for $\frac{1}{4}$ sec. corner

80. Set a post with mound and
chained stake for corner to sections
19, 24, 25 and 30

Land 1st rate

40. Set a post with mound and
chained stake for $\frac{1}{4}$ sec. corner

80. Set a post with mound and
chained stake as a reference corner
for sections 25, 30, 31 and 36
Corner in a deep hole Land 2nd rate

Field notes

of
the surveys of the Eastern
Lines of townships 13, 14, 15,
16, 17, 18, 19 and 20 South of
Range 65 West and townships
14 and 15 South of Range 66
West of the Sixth Principal
Meridian

Names and duties of the Survey Party

Wm H. Pierce } Compassman

George A. Billings }
Hiltington Octahley } Chainmen

Caleb S. Bunsal }
Duncan Campbell } Cornermen

Redwood Fisher } Flagman

W. Bely 20 S. N. 65 W

Commenced at the South West
corner of township 20 South of
Range 63 West of the Sixth
Principal Meridian and ran
North on a true line

13.80 Road Course East

28.20 Edge of bluff 30 feet high

40.00 Set a cottonwood post with
mound and chained stake for corner

73. Right bank of the Arkansas R.

75.80 Left bank of the Arkansas River

June 15th 1862

80. Set cottonwood post with mound
and chained stake for corner to
Section 23, 30, 31 and 36

Sections 31 and 36 lie principally
in the valley of the Arkansas R.

Land 7th rate

Variation 14° East

From this corner 5 chains West
is a conical hill 70 or 80 ft
high

Course East

46.50 Top of divide Course East
and West Few cedar bushes

80.00 Set cottonwood post with
mound and charred stake
for corner to sec 1, 6, 7 and 12
Lincoln land 3rd rate

4000 Set cottonwood post with
mound and charred stake
for 1/4 sec. corner

80.00 Set cottonwood post with
mound and charred stake
for the north West corner of
township 19 South Range
63 West. Land 3rd rate

N 10 deg 19 S R. 6-7-

East on a random line
499.71 Crossed Chaudron S 2 W
South of the north East corner
of township 19 South R. 63 W
June 18th 1862

From the north East corner
of township 19 South Range
63 West ran West on a true line

19.71 Top of bluffs on the West side
of the valley of the Fourkings trail

40 Set cottonwood post with mound
and charred stake for 1/4 sec corner

76.70 Dry run Corner South West

80. Set cottonwood post with mound
and charred stake for corner to
sections 1, 2, 33 and 36
Land 3rd rate

5.75 Top of a ridge

19.20 Dry run Banks 20 ft high Corner 8

40 Set cottonwood post with mound
and charred stake for 1/4 sec cor

61.76 Channel 20 ft deep perpendicular
clay bank Dry Course South

80.00 Set cottonwood post with mound
and charred stake for corner of
sections 2, 3, 34 & 35 Land 3rd rate

0.70 Dry dry channel corner stall East
 4.50 Set cottonwood post with mound
 and charred stake for $\frac{1}{4}$ sec. cr.
 74.68 Channel corner north
 80.00 Set cottonwood post with mound
 and charred stake for corner
 to sections 3.4.34 and 33
 Soil a heavy clay band 3rd etc

29.70 Dry channel corner stall West
 4.00 Set cottonwood post with
 mound and charred stake
 for $\frac{1}{4}$ sec. corner
 53.75 Top of divide
 80.00 Set a cottonwood post with
 mound and charred stake
 for corner to sections 3.32933
 Band 3rd etc

4.00 Set cottonwood post with
 mound and charred stake
 for $\frac{1}{4}$ sec. corner

80. Set a cottonwood post with mound
 and charred stake for corner of
 sections 3.6.31 and 32
 Slightly rolling prairie Grass good
 Band 2nd. etc

40. Set cottonwood post with mound
 and charred stake for $\frac{1}{4}$ sec. corner
 79.71 north West corner of township
 19 South Range 63 West
 The land in this township,
 except the valley of the
 Fontaineau built a portion
 of which is included within
 its limits is almost
 valueless

W. By. Sp. 18 & 19. 60 W

2175

From the North West corner
of township 19 South
Range 65 West ran north
on a true line

Variation $14^{\circ}52'$ East

4500 Set cottonwood post with mound
and chained stake for $\frac{1}{4}$ sec. cor.
Middle of dry run Course East
Few willow brush

8000 Set cottonwood post with
mound and chained stake for
corner of section 25. 30. 31 & 36
Good grass Land 2nd rate

4000 Set cottonwood post with
mound and chained stake
for $\frac{1}{4}$ sec. corner

56.00 Old road to Canon city
Course South West

8000 Set cottonwood post with
mound and chained stake
for corner of section 12. 13. 14 & 18

Surface nearly level Grass long
but thin Land 3rd rate

21. ctuo road from Colorado to Canon
city Course South West

40. Set cottonwood post with mound
and chained stake for $\frac{1}{4}$ sec. corner

61. Top of a stony ridge Course South East

80. Set cottonwood post with mound
and chained stake for corner of
sections 13. 18. 19 and 24

Surface very level Land 3rd rate

40. Set cottonwood post with mound
and chained stake for $\frac{1}{4}$ sec. corner

80. Set cottonwood post with mound
and chained stake for corner of
sections 7. 12. 13 and 18

Land 3rd rate

40 Set cottonwood post with mound
and chained stake for $\frac{1}{4}$ sec. corner

W. By. 4p. 18 J. R. 60 W

217

From the salt West corner
of township 19 South
Range 85 West ran north
on a true line

Variation $14^{\circ}52'$ East

4000 Set cottonwood post with mound
and chained stake for $\frac{1}{4}$ sec. cor.

6000 Middle of dry run Course East
Few willow brush

8000 Set cottonwood post with
mound and chained stake for
corner of sections 25, 30, 31 & 36
Good grass Land 2nd rate

4000 Set cottonwood post with
mound and chained stake
for $\frac{1}{4}$ sec. corner

5600 Old road to Canon city
Course South West

8000 Set cottonwood post with
mound and chained stake
for corner of sections 25, 30, 31 & 36

Surface nearly level Grass long
but thin Land 3rd rate

21. New road from Colorado to Canon
city Course South West

40. Set cottonwood post with mound
and chained stake for $\frac{1}{4}$ sec. corner

61. Top of a strong ridge Course South East

80. Set cottonwood post with mound
and chained stake for corner of
sections 13, 18, 19 and 24

Surface very level Land 3rd rate

40. Set cottonwood post with mound
and chained stake for $\frac{1}{4}$ sec. corner

80. Set cottonwood post with mound
and chained stake for corner of
sections 7, 12, 13 and 18
Land 3rd rate

40. Set cottonwood post with mound
and chained stake for $\frac{1}{4}$ sec. corner

8000 Set a cottonwood post with
around and chained stake
for corner of sections 16.77+13
Though weeds grow very rank
and the soil is to all appear-
ance just soil there is no grass
Land 2nd rate

4500 Set cottonwood post with around
and chained stake for $\frac{1}{4}$ sec. cor.

5300 Deep gully 1 chain wide
Corner North East

5700 Deep gully 10 lbs. wide
Corner East

6400 Deep gully 80 links wide
Corner East

8000 Set cottonwood post with
around and chained stake for
corner to township 18 North
of Range 63 West at the
East side of the valley

No vegetation except glasswood
bushes Probably subject to
overflow during the rainy season
Land 3rd rate

X

From this corner ran East on section line
47289 Crossed merididian 21 links north
of the North East corner of township
18 South Range 63 West

June 19th 1862

Commenced at the North East
corner of township 18 South Range
63 West of the 10th Principal
Meridian and ran West on a
true line dist. sec 1 & 36.

11. Road to Pueblo Corner South

303. Left bank of the Fountain quibant

70. Set cottonwood post with around
and chained stake for $\frac{1}{4}$ sec corner

74. Plowed field $\frac{1}{2}$ mile wide

80. Set cottonwood post with around
and chained stake for corner

to sections 1, 2, 35 and 36
Land can all be irrigated
First rate

11.30 Irrigating ditch 8 ft wide

40.00 Set cottonwood post with
mound and charred stake
for $\frac{1}{4}$ sec. corner

West side of the valley of the
Fontaine qui bouillit

53.30 Ravier Course South West

80.00 Set cottonwood post with
mound and charred stake
for corner of sections 2, 3, 35 & 36
Land 2nd rate

40.00 Set cottonwood post with
mound and charred stake
for $\frac{1}{4}$ section corner

42.80 Top of bluffs on the west
side of a valley which the
river follows from north to south

the township corner

80. Set cottonwood post with mound
and charred stake for corner to
sections 3, 4, 33 and 34,
Land 2nd rate

40. Set cottonwood post with mound
and charred stake for $\frac{1}{4}$ sec. corner

30. Dig gully Banks 6 ft. high
Course South 80° East

80. Set cottonwood post with mound
and charred stake for corner to
sections 4, 3, 32 and 33. Clay soil
Grass seed Land 3rd rate

39.80 Set cottonwood post with mound
and charred stake as reference to
 $\frac{1}{4}$ sec. corner The corner is in a
deep gully 1 chain wide Course
North 70° East

72.80 Dig gully Course North

80.00 Set cottonwood post with mound and chained stake for corner of sections 3, 6, 31 & 32. Grass good Land 2nd rate

40.00 Set a cottonwood post with mound and chained stake for 1/4 sec corner

77.84 North West corner of township 18 South Range 65 West. The Eastern sections of this township are well adapted to agricultural purposes as they can be irrigated by the water of the Fountain qui bond and most of the land is already claimed by settlers. The soil of the township is poor and unfit for cultivation though in some places the water is good.

N. City Tp. 17. S. R. 65 W.

From the North West corner of township 18 South Range 65 West of the Sixth Meridian ran North on a true line Tension 15° East

28. Top of ridge

40. Set cottonwood post with mound and chained stake for 1/4 sec corner

34. Center of a gully. Corner South East

76. Road Corner South East

80. Set cottonwood post with mound and chained stake for corner to sections 25, 30, 31 and 36. Good grass Land 2nd rate

40. Set cottonwood post with mound and chained stake for 1/4 sec corner

80. Set cottonwood post with mound and chained stake for corner to sections 19, 24, 25 and 30. Soil on a ridge. Land 3rd rate

We hereby certify that we have assisted John & William A. Pierce Deputy Surveyors in surveying the Extension South of the Eighth Guide Meridian west from the Third to the Fourth Corner Line South. Thirty miles. The fourth Standard Parallel South from the Eighth Guide Meridian West thirty four miles. and the exterior lines of Townships 13. 14. 15. 16. 17. 18. 19. & 20 South of Range 65 West and Townships 14 & 15 South of Range 66 West of 6th Principal Meridian. And that Standard and Township lines have been in all respects to the best of our knowledge & belief well and faithfully surveyed and the boundary monuments planted according to the instructions furnished by the Survey General.

notes of such survey

John Pierce Deputy
Wm. Pierce Surveyor

Subscribed by the said John
and William A. Pierce
and sworn to before me
a Notary Public for Ada County
in the Territory of Idaho
this 9th day of July 1862
E. M. Ankley
Notary Public
for Ada Co. Id.

Surveyor General's Office at
Denver City Co. T. July 9. 1862
The foregoing field notes of the
survey of the 8th Creek Meridian
between the 3^d & 4th Standard Parallels
South. The 14th Standard Parallel
met from the 8th Creek Meridian
24 miles and the Extension line
of Tps 13. 14. 15. 16. 17. 18. 19 & 20 South
of Range 65 West. and Tps 14 & 15
South of Range 66 West of 6th
Prim. Meridian as Exhibited by
John & William A. Pierce among
their contracts of May 31st 1862
In the month of June & July
1862 having been carefully exam-
ined the necessary Corrections and
Explanations made the said field
notes and the Survey they describe
are hereby approved

Wm. A. Wallace
Surveyor General

Index to Lines

W. N. line of I. S. R. 66 W.	Page	1612
do 4	"	15-22
do 3	"	23-31
do 2 " " "	"	35-43
W. N. line 1	"	44-47
W. N. 5 " 68 W.	"	66-75
do 5 " 69 "	"	76-84
do 4 " 68 "	"	86-95
do 4 " 69 "	"	98-105
do 3 " 68 "	"	106-114
do 8 " 69 "	"	115-127
do 2 " 68 "	"	128-137
W. line 1 " 68 "	"	138-148
W. & N. line. 5 S. R. 65 "	"	155-161
do 4 S. R. 65 "	"	161-166
do 3 " 65 "	"	166-170
do 2 " 65 "	"	171-174
W. line 1 " 65 "	"	177-178
N. & W. line 1 N. " 65 "	"	178-185
do 2 " 65 "	"	184-188
do 3 " 65 "	"	189-195

Index to Lines

W. N. line I. S. R. 67 W. P	193-199
do 4 " 67 " "	199-205
do 3 " 67 " "	205-210
do 2 " 67 " "	210-216
W. line 4 " 67 " "	216-221
W. & N. lines 20 S. " 65 W. "	242-249
do 19 " 65 " "	250-255
do 18 " 65 " "	256-262
do 17 " 65 " "	263-269
W. line 16 " 65 " "	274-277
W. & N. line 15 " 65 " "	278-284
do 14 " 65 " "	285-291
do 13 " 65 " "	292-298
do 15 " 66 " "	299-304
do 14 " 66 " "	310-319

Field Notes
of the
Subdivision lines
of
Township 18 S.
Range 65 W. of the
6th Principal Meridian
in
Colorado Territory,
Surveyed by
William Ashley

Survey commenced July 11th /
1866
Survey completed

Book

4-674.

1A

Township 18 South R. 65 W.

6	42	5	34	4	28	3	22	2	15	1
42		41		33		27		21		
7	41	8	33	9	27	10	21	11	14	12
40		40		32		26		20		13
18	39	17	32	16	26	15	19	14	13	13
37		38		31		25		19		12
19	37	20	31	21	25	22	18	23	11	24
37		36		30		24		18		Sandell
30	36	29	30	28	23	27	17	26	11	25
35		35		29		23		17		
31	34	32	28	33	22	34	16	35	3	36

6-3046

114

Names and duties of
assistants.

C. A. Dean } chairman.
Alexander Duncan }
James Fisher } Flagman
Joel Roe } cornerman

Tp 18 S. R. 65 W.

chains Field Notes of the Sub-
division lines of T_p 18
S. R. 65 W. of the 6th principal
Meridian, in Colorado Territory.
To determine the proper
adjustment of my compass
for subdividing this T_p.
Commence at the corner to
T_ps 18 & 19 S. Ranges 64 & 65
W. and run
North, on a blank line along
the E. Boundary of Sec 36.
Va 15° E.

40.04 To a point 1 m. E. of gr. Sec cor

80.07 To the cor. to Secs 25, 30, 31 & 36.

Therefore to run parallel to
this line, my compass will
remain at a Va of 15° E.

#* N. between Secs 35 & 36.

Va 15° E.

40.00 Set a Boulder Stone 12x9x5
for 4 Sec cor.

Tp. 18 S. R. 65 W.

chains
8000

Set a Boulder Stone 14x
8x5, for cor to Secs 25, 26, 35 & 36.
Land, Hilly, Soil Stony & etc.
Vegetation, Grass

E. on a random line between Secs 25 & 36
Va 15° E.

- 40.00 Set a Stone for Temporary 1/4 Sec cor
46.00 Cap Dry Ravine course S. 70° E.
59.50 Same Ravine course N. E.
80.00 Intersect E. Boundary at
2 lbs N. of Post cor to Secs 25 & 36.
from which cor I run. N.
89° 59' W. on a true line.
40.00 Set a Boulder Stone 16x10x5 for
1/4 Sec cor
80.00 The cor to Secs 25, 26, 35 & 36.
Land, Mostly Hilly 2^d & 3^d rate
Vegetation, Grass, July 10th 1866

N. between Secs 25 and 26.
Va 15° E.

Tp. 18 S. R. 65 W.

chains

- 40.00 Set a Boulder Stone 16x8x4, for 1/4 Sec cor
80.00 Set a Boulder Stone 14x8x5, for
cor to Secs 23, 24, 25 and 26.
Land, pretty rolling 2^d rate
Vegetation, Lunc. and Buffalo grass.

E. on a random line between Secs 24 & 25.
Va 15° E.

- 10.10 Road bears N. W. & S. E.
40.00 Set a Stone for Temporary 1/4 Sec cor
64.00 Top of Bluff bears N. & S.
70.00 Foot of Same
79.90 Enter Plowed ground bearing 20° W.
80.00 — All traces of the cor to
Secs 24, 25, 19, & 30. on the E. ^{having disappeared}
Boundary of the Tp. I re-
establish said cor in the
following manner, viz.
Begin at the gr. Sec cor in
the line between Secs 25 & 30.
The Post Standing in the Moand
and from which cor I run

ch's North between Secs 25 and 30
Va 15° E.

40.00 Set a Post for Temporary cor to
Secs 24, 25, 19 and 30.
continue the line N. between
Secs 24 and 19

~~40.00~~ Va 15° E.

~~40.00~~ All traces of the gr cor between
Secs 19 and ~~24~~ having been dis-
trayed by a Flood. I con-
tinue the line N. between
Secs 19 and ~~24~~, Setting Temp Post,

~~40.00~~ All traces of the cor to Secs
13, 18, 19, & 24, having been
destroyed by Flood. I con-
tinue the line N. between
Secs 13, and 18.

44.04 Va 15° E.

40.00 Set a Temporary Post at the point
for cor to Secs 13, 18, 19, and ~~24~~, from
which my measurement will
commence anew.

40.00 No traces of the gr cor - having
been destroyed by Floods.

Set a Stake for Temporary cor
and continue the line North,
53.80 To Mountain Quibouit course
S. 70° E. 50 lks wide

61.10 To Same Stream course S,
30° W. 100 lks wide

76.80 To Bend in Mountain creek
course S. but soon turns
S. E. 380 lks wide

80.00 The cor to Secs 7, 12, 13, and 18,
having been washed out.
I Set a Post at a point 128,
lks N. of the point for cor
to Secs ^{7, 12, 13, & 18} for a Temporary cor
to Secs 7, 12, 13, and 18, and,
continue the line North,
between Secs 7, & 12,

Va 15° E.

40.00 Set a Post for Temporary cor
all traces of the cor having been

destroyed.

76.00 Right Bank of Fontaine
Dubouit course S. 80° E.
200 lks wide.

80.00 here the cor to Secs 1, 6, 7, and 12
is washed away and the
creek has changed its bed.
I set a Post for temporary
cor to Secs 1, 6, 7, & 12, and
continue the line North
between Secs 1, and 6.
Va 15° E.

12.00 To bend in Fontaine Dubouit
course S. 20° W.

17.00 Leave Bend

40.34 To a point 26 lks W. of the
1/4 Sec cor on the line between
Secs 1, and 6, therefore the
correction for this line
will be 3 lks E. per 1/2 mile
and dividing the difference
in measurement will be

4 lks N. per 1/2 mile

I now retrace the line, and
establish permanent corners.
From the 1/4 Sec cor in, the
line between Secs 1, and 6,
I run S.

Va 14° 58' E.

40.00 Set a Post and charred Stake
in Mound for re-established
cor to Secs 1, 6, 7, & 12.
Land, level 1st rate

South between Secs 7, and 12
Va 14° 58' E.

40.00 Set a Post and charred Stake
in Mound for 1/4 Sec cor

80.00 The point for cor to Secs
7, 12, 13, and 18, coming in.
Bend of creek I therefore
set a Post and charred
Stake in Mound, at a point
128 lks N. of the true cor

10
for witness cor to Secs 7, 12, 13,
and 18.
Land, nearly level 1st rate
and nearly all under cultivation.

S. between Secs 13, and 18.
Ba 14° 58' E.

40.00 Set a Post and charred Stake
in Mound for 1/4 Sec cor.
80.00 Set a Post and charred Stake
in mound
for cor to Sec 13, 18, 19, and 24
Land level 1st rate

S. between Secs 19 and 24.
Ba 14° 58' E.

40.00 Set a Post and charred Stake
in Mound for 1/4 Sec cor.
80.00 Set a Post and charred Stake
in Mound for cor to Secs
24, 25, 19, and 30.
Land nearly level 1st rate.

11
S. between Secs 25, and 30.
Ba 14° 58' E.
40.00 The 1/4 Sec cor on line between
Secs 25, and 30. —

I now return to the cor to
Sec 24, 25, 19 and 30 and
correct my random line
between Secs 24, and 25. I
find the length of line
to be 80 chs and the fall-
ing to be 12, lks. S. of
the cor to Secs 24, and 25,
from which cor I run
S. 89° 55' W on a true line.

40.00 Set a Boulder Stone 18x
6x5, for 1/4 Sec cor.

80.00 The cor to Secs 23, 24, 25, & 26.
Land, rolling 2^d rate.

Vegetation. Buffalo grass
July 11th 1866.

North, between Secs 23, and 24,

Tp 18 S. R. 65 W.

or 15° E

- 5,54 Old Road bears N. W. x S. E.
 16,00 Dry Ravine course S. 80° E.
 40,00 Set a Boulder Stone 12x10x
 9 for 1/4 Sec cor.
 57,57 Dry Ravine course E.
 80,00 Set a Boulder Stone 20x9x
 5. for cor to Secs 13, 14, 23, & 24.
 Land, rolling 2^d rate.
Vegetation, Buffalo grass

E. on a random line between Secs 13 & 24.
 or 15° E

- 38,40 Top of Bluff bears N. 30° W.
 40,00 Set a Stone for temporary 1/4 Sec cor.
 45,00 Foot of Bluff
 76,70 Irrigating Ditch course S. W.
 80,10 Intersect E. Boundary at a
 point 19 1/2 S. of Post cor to
 Secs 13, and 24, from which
 cor I run S. 89° 52' W on
 a true line
 40,05 Set a Granite Stone 12x10x8,

Tp 18 S. R. 65 W.

- 80,10 with Stone mound for 1/4 Sec cor
 the cor to Secs 13, 14, 23, & 24
 Land, 1st 1/2 rolling 2^d rate
 balance level 1st rate
Vegetation, Buffalo grass

North between Secs 13, and 14.
 or 15° E.

- 39,25 Dry Ravine course E.
 40,00 Set a Boulder Stone 14x12x10,
 for 1/4 Sec cor.
 41,39 Road bears N. 70° E.
 62,50 Dry Ravine course N. 50° E.
 80,00 Set a Boulder Stone 24x8x5.
 for cor to Secs 11, 12, 13, and 14.
 Land, Hilly 3^d rate
Vegetation, Buffalo grass

E. on a random line between Secs 12, & 13.
 or 15° E.

- 6,15 Dry Run course S. but soon turns E.
 40,00 Set a Stone for temporary 1/4 Sec cor.
 79,93 Intersect. E. Boundary at a

Up 18 S. R. 65 W.

chr point 12 lks N. of point for
true cor. ~~from which~~ to Secs
12 and 13. from which point
I run N. 89° 55' W. on a
true line.

39.99 Set a Boulder Stone 18 X 8 X 5,
for 1/4 Sec cor.

79.93 The cor. to Secs 11, 12, 13, and 14.
Land nearly level 1st rate
Vegetation Buffalo grass

North between Secs 11 and 12.

Var 15° E.

9.40 Day Run course S. 50° E.

40.00 Set a Boulder Stone 16 X 10 X 8,
for 1/4 Sec cor.

80.00 Set a Stone 16 X 10 X 6, for cor.
to Secs 1, 2, 11, and 12.

Land, pretty rolling 2^d rate.
Vegetation Sage Brush and grass

Run on random line between Secs 11 and 12.

Up 18 S. R. 65 W.

Var 15° E.

37.20 Enter Plowed Land bears N. 10° E.

40.00 Set a Post for Temporary 1/4 Sec cor.

74.50 To Mountain Quibonit, course
S. 150 lks wide

79.90 Intersect E. Boundary at a
point 8 lks S. of Post cor to
Secs 1 and 12, from which
cor I run S. 89° 57' W. on
a true line

39.95 Set a Post and Marked Stone
in Mound for 1/4 Sec cor.

79.90 The cor. to Secs 1, 2, 11, and 12.
Land nearly level 1st rate
and nearly all under cultivation.

North on a random line between Secs 12, 13,

Var 15° E.

40.00 Set a Stone for Temporary 1/4 Sec cor.

61.25 Irrigating Ditch course S. 25° E.

61.40 Enter Plowed Land bears S. 25° E.

80.88 Intersect N. Boundary at a

Tp. 18 N. R. 65 W.

- ch^d point 10 lks W. of the cor to
Secs 1. and 2. from which
cor I run S. 00° 04' W. on
a true line.
40.88 Set a Boulder Stone 14x9x6.
for 1/4 Sec cor
80.88 The cor to Secs 1, 2, 11, and 12.
Land; 1st 1/2 rolling 2^d rate.
Last 1/2 nearly level 1st rate
July 12th 1866.

North, between Secs 34 and 35.
Va 15° E.

- 9.00 Dry Run course S. 40° E.
10.70 Dry Run course S. 70° E.
40.00 Set a Boulder Stone 18x10x
8. for 1/4 Sec cor
80.00 Set a Boulder Stone 20x10x6.
for cor to Secs 26, 27, 34, and 35.
Land, rolling 2^d rate
Vegetation, Bunch grass

Tp. 18 S. R. 65 W.

E. on a random line between Secs 26 & 35.
Va 15° E.

- 40.00 Set a Stone for Temporary 1/4 Sec cor
56.00 Dry Run course S.
79.70 Intersect N. and S. line at a point
40 lks S. of Cor to Secs 25
26, 35, and 36. from which cor
I run S. 89° 43' W. on a true line
39.85 Set a Boulder Stone 12x10x5
for 1/4 Sec cor
79.90 The cor to Secs 26, 27, 34 & 35.
Land, rolling 2^d rate.
Vegetation, Bunch grass

North, between Secs 26, and 27.
Va 15° 15' E.

- 40.00 Set a Boulder Stone 14x10x6.
for 1/4 Sec cor
80.00 Set a Boulder Stone 14x10x7.
for cor to Secs 22, 23, 26, 27.
Land, rolling 2^d rate.
Vegetation, Bunch grass.

7/18 S. R. 65 W.

E. on a random line between Secs 23 & 26.
B a 15° 15' E.

- 1240 Dry Ravine course S. E.
4000 Set a Stone for Temporary 1/4 Sec cor
4800 Dry Ravine course S. 20° W.
79.96 Intersect. N. and S. line at
a point 10 M. N. of cor to
Secs 23, 24, 25, and 26, from
which cor I run N. 89° 58'
W. on a true line
39.98 Set a Boulder Stone 16x12x
7. for 1/4 Sec cor.
79.96 The cor to Sec 22, 23, 26, and 27,
Second, rolling 2 rate
vegetation. Buffalo & bunch grass
-

North between Secs 22 and 23.
B a 15° E.

- 1900 Dry Ravine course S. 70° E.
4000 Set a Boulder Stone 15x9x
5. for 1/4 Sec cor.
50.50 Old Road bears S. 70° E.

7/18 S. R. 65 W.

- 7700 Dry Ravine course S. 40° E.
8000 Set a Boulder Stone 13x8x
5. for cor to Secs 14, 15, 22, & 23,
Second, rolling 2 rate
vegetation. Buffalo grass
-

E. on a random line between Secs 14 & 23.
B a 15° E.

- 4000 Set a Stone for Temporary 1/4 Sec cor
79.85 Intersect. N. & S. line at Stone
cor to Secs 13, 14, 23, and 24
from which cor I run W.
on a true line.
39.93 Set a Boulder Stone 10x10x8.
for 1/4 Sec cor.
Second, rolling 2 rate.
vegetation. Buffalo & bunch grass
-

North between Secs 14 & 15.
B a 15° E.

- 10.80 Road bears N. 40° E.
4000 Set a Boulder Stone 14x10x5. for

Tp. 18 S. R. 65 W.

Ch² 1/4 Sec cor

68.00 Dry Ravine course N 40° E

80.00 Set a Boulder Stone 14x9x4.

and build Stone mound for cor
to Sec's 10, 11, 12 and 15

Land, first 60 chs rolling 2^d rate
balance broken 3^d rate,

E. on a random line between Sec 11, 12, 14
Va 15° E.

22.40 Dry Ravine course N. E.

40.00 Set a Stone for temporary 1/4 Sec cor

80.06 Intersect N. & S. line at a point

12. lbs S. of cor to Sec's 11, 12, 13, & 14,
from which cor I run S. 89° 55' W.
on a true line.

48.03 Set a Boulder Stone 12x10x5:
for 1/4 Sec cor

80.06 The cor to Sec's 10, 11, 14, and 15:

Land, pretty rolling 2^d rate.
Vegetation. Bunch grass

Tp. 18 S. R. 65 W.

North, between Sec's 10 and 11.

Va 15° E.

25.00 Dry Ravine course N. E.

40.00 Set a Boulder Stone 13x8x5
for 1/4 Sec cor

46.00 Dry Run course E.

80.00 Set a Boulder Stone 20x7x6
for cor to Sec's 2, 3, 11, & 11.

Land, rolling 2^d rate

Vegetation Bunch grass

E. on a random line between Sec's 2, 3, 11.
Va 15° E.

13.00 Dry Ravine course S. 30° E.

40.00 Set a Stone for temporary 1/4 Sec cor

79.88 Intersect N. & S. line at a point

23. lbs S. of cor to Sec's 1, 2, 11, & 12,
from which cor I run S. 89° 50'
W. on a true line.

39.94 Set a Boulder Stone 15x10x5.
for 1/4 Sec cor

79.88 The cor to Sec's 2, 3, 10 & 11.

Top 18. S. R. 65 W.

Sound, rolling 2^d rate
Vegetation, Bunch grass

North on a random line between Secs 2 & 3
 Va 15° E.

40.00 Set a Stone for Temporary 1/4 Sec cor
 81.61 Intersect N. Boundary at a
 point 20 Mts E. of cor to Secs
 2 and 3, from which cor I
 run S. 9° E. on a true line.
 41.61 Set a Boulder Stone 16x12x3.
 for 1/4 Sec cor

81.61 The cor to Secs 2, 3, 10, & 11.
 Sound, rolling 2^d rate,
 Vegetation, Bunch grass
 July 13th 1866.

North between Secs 33 and 34.
 Va 15° E.

9.00 Dry Ravine course E.
 40.00 Set a Boulder Stone 9x8x7. for
 1/4 Sec cor

Top 18. S. R. 65 W.

50.40 Dry Ravine course N.E.
 57.50 Dry Ravine course S. 60° E.
 80.00 Set a Boulder Stone 14x9x5. for
 cor to Secs 27, 28, 33, and 34.
 Sound, rolling 2^d rate.
Vegetation Bunch & Buffalo grass

E. on a random line between Secs 27 & 34
 Va 15° E.

40.00 Set a Stone for Temporary 1/4 Sec cor
 71.00 Dry Ravine course S. 30° E.
 80.30 Intersect N & S. line at a point
 62 Mts. N of the cor to Secs 26, 27,
 34 & 35, from which cor I run
 N 87° 33' W. on a true line,
 40.15 Set a Boulder Stone 16x14x8. for
 1/4 Sec cor

80.80 The cor to Secs 27, 28, 33, & 34.
 Sound rolling 2^d rate
Vegetation Sage Brush & grass

North between Secs 27 and 28.

7/18 S. R. 65 W.

Va 15° E.

40.00 Set a Boulder Stone 13x12x5.
for 1/4 Sec cor.

80.00 Set a Boulder Stone 10x9x
6, for cor. to Secs 21, 22, 27, & 28.

Sound, rolling 2^d rate
Vegetation: Sage Brush & grass

E. on a random line between Secs 22 & 27

Va 14° 45' E.

29.00 Dry Ravine course S. 30° E

40.00 Set a Stone for Temporary 1/4 Sec cor.

80.18 Intersect N. & S. line at a point

28 lbs N. of the cor. to Secs 22, 23.

26 and 27, from which cor. I
run N. 89° 48' W. on a true line.

80.09 Set a Boulder Stone 14x12x4.
for 1/4 Sec cor.

80.18 the cor. to Secs 21, 22, 27 & 28.

Sound, rolling 2^d rate
Vegetation: Bunch & Buffalo grass

7/18 S. R. 65 W.

North between Secs 21. and 22.

Va 15° E.

35.00 Dry Ravine course S. 40° E

40.00 Set a Boulder Stone 12x10x4.
for 1/4 Sec cor.

65.10 Road bears N. 50° E.

80.00 Set a Granite Stone 18x6x5. for
cor. to 2 Secs 15, 16, 21, & 22.

Sound, rolling 2^d rate
Vegetation: Buffalo grass

E. on a random line between Secs 15 & 22.

Va 14° 30' E.

40.00 Set a Stone for ^{Temporary} 1/4 Sec cor.

51.20 Road bears N. 60° E.

79.90 Intersect N. & S. line at a point

4 lbs N. of the cor. to Secs 14, 15.

22, and 23, from which cor. I

run N. 89° 58' W. on a true line

39.95 Set a conglomerate Stone 16x10x
4. for 1/4 Sec cor.

Sound, rolling 2^d rate

7 1/2 18 S. R 65. M.

North between Sec's 15 & 16.
Va 15° E.

40.00 Set a conglomerate Stone
14x10x5 for 1/4 Sec cor.

70.08 Dry Ravine course E

80.00 Set a Boulder Stone 16x8x4.
for cor to Sec's 9, 10, 15 and 16.

Sound, pretty rolling 2^d rate
Vegetation Bunch grass

E. on a random line between Sec's 10 & 15.
Va 14° 40' E.

23.20 Dry Ravine course N. 60° E.

40.00 Set a Stone for Temporary 1/4 Sec cor

79.96 Intersect N. & S. line at a point
10 lbs N. of the cor to Sec's 10, 11,
14, and 15, from which cor I
run N. 89° 58' W. on a true line.

39.98 Set a Boulder Stone 14x10x5.
for 1/4 Sec cor

79.96 The cor to Sec's 9, 10, 15 and 16.
Sound, Hilly 2 and 3^d rates

7 1/2 18 S. R 65. M.

North between Sec's 9 and 10.
Va. 15° E.

25.50 Dry Ravine course N. 40° E

38.60 Dry Ravine course N. 30° E

40.00 Set a Granite Stone 16x10x6.
for 1/4 Sec cor

73.60 Dry Ravine course N. E.

80.00 Set a Granite Stone 17x8x5.
for cor to Sec's 3, 4, 9, & 10.

Sound, Hilly 3^d rate

E. on a random line between Sec's 3 and 10.
Va 14° 30' E.

13.20 Dry Ravine course N. 70° E.

40.00 Set a Stone for Temporary 1/4 Sec cor

52.40 Dry Ravine course S. 45° E

80.14 Intersect N. and S. line at a point
6 lbs. S of cor to Sec's 2, 3, 10, & 11,
from which cor I run S. 89° 59'
W. on a true line.

40.07 Set a Boulder Stone 14x8x5.
for 1/4 Sec cor

7/18 21. N. 65 W.

80.14 The cor to Secs 3, 4, 9, & 10.

Land: nearly level 2^d rate,
Vegetation: Bunch grass

E. on a random line between Secs 3 & 4,
Va 15° E.

40.00 Set a Stone for Temporary 1/4 Sec cor

45.00 Dry River course E. 200 lbs wide

81.35 Intersect N. Boundary at a point
5 lbs E. of the cor to Secs 3 & 4,
from which cor I run S. 2
E. on a true line.

41.35 Set a Granite Stone 17x8x5
for 1/4 Sec cor

81.35 The cor to Secs 3, 4, 9, & 10.

Land: nearly level 2^d rate,
Vegetation: Bunch grass

July 14th 1866.

North between Secs 32 and 33.

Va 15° E.

40.00 Set a Boulder Stone 16x8x5

7/18 S. N. 65 W.

chis for 1/4 Sec cor

61.00 Dry Ravine course S 80° E

80.00 Set a Boulder Stone 17x7x5
for E. cor to Secs 28, 29, 32, & 33.

Land: rolling 2^d rate
Vegetation: Bunch grass

E. on a random line between Secs 28 & 33.
Va 14° 45' E.

39.50 Dry Ravine course S 60° E

40.00 Set a Stone for Temporary 1/4 Sec cor

53.50 Dry Ravine course S 70° E

79.85 Intersect E. & S. line at a point

34 lbs S. of cor to Secs 27, 28,

33, & 34, from which cor I run
S. 89° 45' W. on a true line

39.93 Set a Boulder Stone 14x12x8.
for 1/4 Sec cor

79.85 The cor to Secs 28, 29, 32, & 33.

Land: rolling 2^d rate
Vegetation: Bunch & Buffalo grass

7/4 18 S. N. 65 W.

ch's North between Secs 28 and 29.
Va 15° E.

40.00 Set a Boulder Stone 13x10x4
for 14 Sec cor

72.60 Dry having course E

80.00 Set a Boulder Stone 17x7x6.
for cor to Secs 20, 21, 28 and 29.
Sound, rolling 2^d rate

E. on a random line between Secs 21, 28,
Va 15° E.

40.00 Set a Boulder for Temporary 14 Sec cor
79.93 Intersect N. and S. line at
a point 10 lbs. N. of the cor to
Secs 21, 22, 27, and 28, from
which cor I run N. 89° 56' W.
on a true line

39.96 Set a Boulder Stone 12x10x5.
for 14 Sec cor

79.93 The cor to Secs 20, 21, 28, & 29.
Sound, rolling 2^d rate
Vegetation. Buffalo grass

7/4 18 S. N. 65 W.

North between Secs 20 & 21.
Va 15° E.

40.00 Set a Boulder Stone 13x10x4
for 14 Sec cor

54.90 Road bears E. & N

80.00 Set a Boulder Stone 15x7x5.
for cor 16, 17, 20, and 21.

Sound, rolling 2^d rate
Vegetation. Buffalo grass

E. on a random line between Secs 16 & 21
Va 15° E.

40.00 Set a Boulder Stone for Temporary 14 Sec cor
79.80 Intersect N. and S. line at a
point 5 1/2 lbs. N. of cor to Secs 15, 16,
21, and 22 from which cor I run
S. 89° 58' W. on a true line.

39.90 Set a Boulder Stone 16x10x6.
for 14 Sec cor

79.80 The cor to Secs 16, 17, 20, & 21.
Sound, partly rolling 2^d rate
Vegetation. Buffalo grass

7/18 S. N. 65 W.

North between Secs 16 and 17.
Va 15° E.

40.00 Set a Boulder Stone 14x9x4,
for 14 Sec cor

80.00 Set a Boulder Stone 18x9x6,
for cor to Secs 8, 9, 16, & 17.
Land rolling 2^d rate.
Vegetation. Buffalo grass

E. on a random line between Secs 9 & 16.
Va 15° E.

40.00 Set a Post for Temporary 14 Sec cor
79.70 Intersect N. and S. line at
a point 18 lks S. of cor to
9, 10, 15, and 16, from which
cor I run S. 89° 52' W. on
a true line.

39.85 Set a Post and marked Stone
in mound for 14 Sec cor

79.70 The cor to Secs 8, 9, 16, & 17.
Land gently rolling 2^d rate
Vegetation. Buffalo grass

7/18 S. N. 65 W.

North between Secs 8 and 9.
Va 15° E.

40.00 Set a Boulder Stone 14x10x5
for 14 Sec cor

71.25 Dry Run course N. 50° E.

80.00 Set a Boulder Stone 12x9x5, for
cor to Secs 4, 5, 8, and 9.
Land rolling 2^d rate
Vegetation. Buffalo grass

E. on a random line between Secs 4 & 8.
Va 15° E.

16.40 Dry Run course N. 60° E

40.00 Set a Stone for Temporary 14 Sec cor

79.60 Intersect S. & N. line at a point
24 lks S. of the cor to Secs 3, 4, 8, & 16,
from which cor I run S 89°
50' W. on a true line.

39.80 Set a Boulder Stone 12x10x8,
for 14 Sec cor.

79.60 The cor to Secs 4, 5, 8, and 9.
Land broken 3^d rate

$\frac{7}{16}$ 18 S. $N. 65^{\circ}$ W.

North on a random line between Secs 4 & 5.
 Va 15° $15'$ E.

40.00 Set a Stone for Temporary $\frac{1}{4}$ Sec cor

81.70 Intersect N Boundary at a point 16 lks E. of cor to Secs 4 and 5, from which cor I run S. 7° E. on a true line,

41.70 Set a Boulder Stone $14 \times 10 \times 10$, for $\frac{1}{4}$ Sec cor

81.70 The cor to Secs 4, 5, 8, and 9,
 Sandy, Broken. 2° rate.

July 15th 1866.

North, between Secs 31, & 32.

Va 15° E.

40.00 Set a Post and charred Stake in mound for $\frac{1}{4}$ Sec cor

66.70 Dry Ravin course S. 70° E

80.00 Set a Post and charred Stake in mound for cor to Secs 29, 30, 31, and 32,

$\frac{7}{16}$ 18 S. $N. 65^{\circ}$ W.

Sandy, gently rolling 2° rate

E. on a random line between Secs 29 & 32.

Va 15° E.

40.00 Set a ^{Post for} Temporary $\frac{1}{4}$ Sec cor

81.22 Intersect N & S line at a point 18 lks N. of cor to Secs 28, 29, 32, & 33, from which cor I run N. 89° $52'$ W. on a true line

40.11 Set a Post and charred Stake ~~for~~ in mound for $\frac{1}{4}$ Sec cor

80.22 The cor to Secs 29, 30, 31, and 32.

Sandy, rolling 2° rate

Vegetation. Bunch & Buffalo grass

W. on a random line between Secs 30 & 31.

Va 15° E.

40.00 Set a Post for Temporary $\frac{1}{4}$ Sec cor

79.48 Intersect N Boundary at a point 12 lks E. of cor to Secs 30 & 31, from which cor I run N. 89° $55'$ E. on a true line

39.48 Set a Post and charred Stake

2 1/2 p. 18 S. R. 65 W.

ch's for 1/4 Sec cor

79.48 The cor to Secs 29, 30, 31, and 32,
Land: partly rolling 2^d rate
Vegetation: Bunch & Buffalo grass

North between Secs 29 & 30.
Ea 15° E.

40.00 Set a Post and chared Stake
in mound for 1/4 Sec cor

80.00 Set a Post and chared Stake
in mound for cor to Secs 19, 20,
29, and 30.
Land: partly rolling 2^d rate
Vegetation: Bunch & Buffalo grass

E. on a random line between Secs 20 & 29.
Ea 15° E.

40.00 Set a Post for temporary 1/4 Sec cor

43.00 Small Mark in corner S. 20° E.

80.14 Intersect N. & S. line at a point
12 Mts N of cor to Secs 20, 21, 28 & 29,
from which cor I run N 89° 55'

2 1/2 p. 18 S. R. 65 W.

W. on a true line

40.07 Set a Post and chared Stake
in mound for 1/4 Sec cor

80.14 The cor to Secs 19, 20, 29, & 30.
Land: partly rolling, 2^d rate
Vegetation Bunch grass

W. on a random line between Secs 19 & 30.
Ea 15° E

7.40 head bear N. 60° E

40.00 Set a Post for temporary 1/4 Sec cor

79.26 Intersect W. Boundary line at
a point 16 Mts. S. of cor to Secs
19, & 30 from which cor I run
S. 89° 53' E. on a true line.

39.26 Set a Post and chared Stake
in mound for 1/4 Sec cor

79.26 The cor to Secs 19, 20, 29, and 30,
Land: partly rolling 2^d rate
Vegetation: Bunch grass

North. between Secs 19. & 20.

7/18 S R 65 W

chp for 1/4 Sec cor

79.48

The cor to Secs 29, 30, 31, and 32,
Land: pretty rolling 2^d rate
Vegetation. Bunch & Buffalo grass

North between Secs 29 & 30.
Va 15° E.

4000 Set a Post and chared Stake
in mound for 1/4 Sec cor

8000

Set a Post and chared Stake
in mound for cor to Secs 19, 20,
29, and 30.

Land: pretty rolling 2^d rate
Vegetation. Bunch & Buffalo grass

E. on a random line between Secs 20 & 29.
Va 15° E.

4000 Set a Post for Temporary 1/4 Sec cor

48.00 Small Ravin course S. 20° E.

80.14 Intersect N. & S. line at a point
12 M. N. of cor to Secs 20, 21, 28 & 29,
from which cor I run N 89° 55'

7/18 S R 65 W

W. on a true line

40.07 Set a Post and chared Stake
in mound for 1/4 Sec cor

80.14 The cor to Secs 19, 20, 29, & 30.

Land: pretty rolling. 2^d rate
Vegetation Bunch grass

W. on a random line between Secs 19 & 30.
Va 15° E

7.40 Road bears N. 60° E

4000 Set a Post for Temporary 1/4 Sec cor

79.26 Intersect W. Boundary line at
a point 16 M. S. of cor to Secs
19 & 30 from which cor I run
S. 89° 55' E. on a true line.

39.26 Set a Post and chared Stake
in mound for 1/4 Sec cor

79.26 The cor to Secs 19, 20, 29, and 30.
Land: pretty rolling 2^d rate
Vegetation. Bunch grass

North. between Secs 19 & 20.

7/18. S. 76. 65 W.

Va 15° E.

- 23.00 Road bears N. 40° E.
 27.30 Road bears N. 70° E.
 40.00 Set a Post and ~~chard~~ Stake
 in mound for 1/4 Sec cor
 80.00 Set a Post and chard Stake
 in mound for cor to Secs
 17, 18, 19, and 20.
 Sandy, pretty rolling 2^d rate
 Vegetation: Bunch & Buffalograss

Run on a random line between Secs 17 & 20

Va 15° E.

- 40.00 Set a Post for Temporary 1/4 Sec cor
 80.20 Intersect N. & S. line at a point
 26 lbs N. of cor to Secs 16, 17, 20
 and 21, from which cor I run
 N 89° 48' W. on a true line.
 40.10 Set a Post and chard Stake
 in mound for 1/4 Sec cor
 80.20 The cor to Secs 17, 18, 19 and 20.
 Sandy, pretty rolling 2^d rate

7/18. S. 76. 65 W.

random
 W. on a ~~line~~ line between Secs 18 & 19.

Va 15° E.

- 40.00 Set a Post for Temporary 1/4 Sec cor
 78.84 Intersect W. Boundary at a point
 28 lbs S. of cor to Secs 18, & 19,
 from which cor I run S. 89°
 48' E on a true line.
 38.84 Set a Post and chard Stake
 in mound for 1/4 Sec cor
 78.84 The cor to Secs 17, 18, 19, and 20.
 Sandy, rolling 2^d rate
 Vegetation: Bunch grass

July 16th 1866

North between Secs 17 & 18.

Va 15° E.

- 40.00 Set a Post and chard Stake
 in mound for 1/4 Sec cor
 80.00 Set a Post and chard Stake
 in mound for cor to Secs
 17, 18, 19 and 20.
 Sandy, pretty rolling 2^d rate
 Vegetation: Bunch & Buffalo grass

40
Tp 18 S R. 65 W.

ch₃ E. on a random line between Secs 8 & 12
Va 15° E.

4000 Set a Post for Temporary $\frac{1}{4}$ Sec cor

80,34 Intersect N. & S. line at a point
20 lks N. of the cor to Secs 8,
9, 16, and 17, from which cor.

run N. 89° 51' W. on a true line,
40,17 Set a Post and charred Stake
in mound for $\frac{1}{4}$ Sec cor.

80,34 The cor to Secs 7, 8, 17, & 18.
Land pretty rolling 2^d rate
Vegetation. Bunch grass

W. on a random line between Secs 7 & 18,
Va 15° E.

40,00 Set a Post for Temporary $\frac{1}{4}$ Sec cor

79,02 Intersect. W. Boundary at a
point 40 lks. S. of cor to Secs
7 and 18, from which cor
run S. 89° 43' E. on a true line.

38,52 Set a Post and charred Stake
for in mound for $\frac{1}{4}$ Sec cor

41
Tp 18 S R. 65 W.

78,52 The cor. to Secs 7, 8, 17, and 18.

Land rolling 2^d rate
Vegetation Bunch & Buffalo grass

North between Secs 7 and 8,
Va 15° E.

40,00 Set a Post and charred Stake
in mound for $\frac{1}{4}$ Sec cor.

48,70 ^{by} ~~by~~ ^{draining course} ~~draining course~~ N. 65° E.
80,00 Set a Post and charred Stake
in mound, for cor to Secs 5
6, 7 and 8,

Land, rolling 2^d rate
Vegetation. Bunch grass

E. on a random line between Secs 5 & 8,
Va 15° E.

40,00 Set a Post for Temporary $\frac{1}{4}$ Sec cor

80,50 Intersect N. & S. line at a point
32 lks N. of the cor to Secs 4, 5
8, and 9, from which cor.

run. N. 89° 46' W. on a true line

40,25 Set a Post and charred Stake

2 1/2 18 S. N. 65 W.

in Mound for 1/4 Sec cor
8050 The cor to Secs 5, 6, 7, and 8.
Land, Hilly 3^d rate

W. on a random line between Secs 6 & 7,
Va 15° E.

4000 Set a Post for Temporary 1/4 Sec cor

78.18 Intersect. N. Boundary at a
point 22 lbs. S. of the cor
to Secs 6 and 7, from which
cor I run S. 87° 51' E. on a true line.

5018 Set a Post and chand Stake
in Mound for 1/4 Sec cor

78.18 The cor to Secs 5, 6, 7, & 8.
Land, Hilly 3^d rate,
Vegetation. Bunch grass

N. on a random line between Secs 6 & 7
Va 15° E.

4000 Set a Stone for Temporary 1/4 Sec cor

7240 Dry Run course N. 65° E.

8038 Intersect. N. Boundary at

2 1/2 18 S. N. 65 W.

a point 8 lbs E. of the cor to
Secs 5, and 6, from which
cor I run S. 3° E. on a true line.

40.78 Set a Boulder Stone 18 X 10 X 6,
for 1/4 Sec cor

80.78 The cor to Secs 5, 6, 7, and 8.
Land, Broken 3^d rate
Vegetation. Bunch grass

July 17th 1866

General Description.
The quality of Land in
this Township is on an average
2^d rate. Secs 1, 2, 12, 13, and 24,
are mostly lands of first
quality and are settled
and mostly under cultivation.
Producing corn, Wheat, and
Oats of fine quality.
Mountain Louisville, a
fine Stream of pure water
running through the above

Sections. affording an abundance of Water for Irrigating purposes, making a very desirable Farming district.

Wild currents of fine flavor abound along the creek



45A

Township 18 South R. 64 W.

6	86	5	74	4	67	3	60	2	53	1
85	85	85	74	66	59	53				
7	84	8	73	9	66	10	59	11	52	12
83	83	83	72	65	58	52				
18	82	17	72	16	65	15	58	14	51	13
81	80	80	71	64	57	50				
19	80	20	70	21	60	22	57	23	50	24
79	78	78	70	63	56	49				
30	77	29	69	28	62	27	55	26	48	25
76	76	76	68	61	54	47				
31	75	32	68	33	61	34	54	35	47	36

65
Twp. 12. S. R. 64 W.
There are several good Springs
of fresh water and also
Several Small Streams
in the Township affording
an ample supply of
Water for ordinary pur-
poses.

317
We hereby certify that we
assisted Wm Ashley deputy
surveyor in surveying the
Exterior lines of Tps 18 S. R.
64 W. The subdivisional lines
of Tps. ~~18~~ S. R 64 W. 18 & 65.
Tps. 12, 14 & 15 S. R 65. - 12
& 13 S. R. 66 W. of the 6th
Principal Meridian in
Colorado and that said
Tps have been in all re-
spects to the best of our
knowledge and belief well
and faithfully surveyed
and the boundary monuments
planted according to the
instructions furnished by
the Surv. Genl.

Alexander D. McKim
Lucile H. Deane & Chairman
Jas G. Fisher & Foreman
John Roe & Monumentman

Territory of Colorado 3rd
 Arapahoe County 3rd

Subscribed
 by the above named persons
 and sworn to before me
 this 7th day of Sept. 1866.

Eli W. Ashley
 Notary Public

I William Ashley, deputy
 surveyor, do solemnly swear
 that in pursuance of a con-
 tract with John Pierce sur-
 veyor Genl. of the public lands
 of the United States in the
 Territory of Colorado bearing
 date the 25th of May 1866
 and in strict conformity to
 the laws of the U.S. and

the instructions furnished
 by the Surv. Genl. I have
 faithfully surveyed the
 exterior lines of Tps. 18 S. R.
 64 W. and the subdivisional
 lines of Tps. 18 S. R. 64, 18 S. R.
 65, 12, 14 & 15 S. R. 65, 12 &
 13 S. R. 66, W of the 6th Prime
 Meridian in Colorado, and
 do further solemnly swear
 that the foregoing are the
 true and original field notes
 of such survey

William Ashley
 Deputy Surveyor.

Territory of Colorado 3rd
 Arapahoe County 3rd

Subscribed
 and sworn to before me this
 7th day of Sept 1866.

Eli W. Ashley
 Notary Public

Survey General's office
 Denver Sept. 24th 1866.
 The foregoing field notes
 of the survey of the exterior
 lines of Twp. 18 S. R 64 N. and
 the subdivisional lines of
 Twp. 18 S. R 64, 18 S R 65, 12
 14 & 15 S R 65 and 12 & 15
 S R 66 N. of the 6th Pri-
 meridian - executed by Wm
 Ashley under his contract
 of May 25th 1866 - having
 been critically examined
 the necessary corrections and
 explanation, made the said
 field notes and the surveys
 they describe are hereby
 approved

John Pine
 Survey General
 of Colorado & Utah

A

Sub. Sines

Sp. 18, 0. R. 66. W.

S. E. Wilmore

Under contract dated

Aug 28-1973

Survey com. Sept 20/73

" ended Oct. 3-73

Territory of Colorado }
County of Pueblo } Sd.

B

I Titus C. Wetmore having
been appointed a Deputy Surveyor of
the lands of the United States in
the Territory of Colorado do solemnly
swear, that I will well and faithfully
and to the best of my skill and ability
execute the duties confided to me
pursuant to a contract with W. H. Leasing
surveyor general of public lands in
Colorado bearing date the twenty-eight
day of July A.D. 1873. according to the Laws
of the United States and the instructions
received from the said Surveyor General.

Titus C. Wetmore
Sworn to and subscribed before me
this 20th day of September A.D. 1873.

George H. White
Clerk of the District Court
Third Judicial District of
Colorado Territory.

Territory of Colorado
County of Pueblo 3

C

I, William H. Lorinier and I Samuel
H East do solemnly swear, that I will
faithfully execute the duties of chaincarrier,
that I will lead the chain upon uneven ground
and plumb the tally pins, whether by sticking
or dropping the same, that I will report
the true distance to all notable objects and
the true length of all lines that I assist
in measuring to the best of my skill and
ability.

William H Lorinier
Samuel H East

I sworn to and subscribed before me
this 20th day of September 1873.

Allegret Ponte
Clerk of the District Court
3^d Judicial District of
Colorado Territory.

Territory of Colorado }
Pueblo County } L. D.

I, Lewis R. Stenn
do solemnly swear, that I will will and
truly perform the duties of Flagman
according to instructions given me,
and to the best of my skill and
ability.

Lewis R. Stenn

I have read and subscribed before me
this 29th day of September AD 1873.

George H. White
Clerk of the
3rd Judicial District of
Colorado Territory.

Township 18 S Range 66 W

Township 18 S Range 66 W

Field Notes of the Subdivision
lines of Township 18 South
of Range 66 West of the 6th
Principal Meridian

To determine the proper
adjustment of my Transit
for subdividing this Township
Commence at the South
East Corner of the same and
and run

North on a blank line
along the east boundary
of Section 36

Variation 15° 00' East

4003 To the Quarter Section Corner
8006 to the Corner to Section 36
25 and 86

to relate this line or run
parallel thereto by the
it must be adjusted to
to a variation of
15° 00' East

These notes
should not
have been
crossed out.
The only official
field notes on file
at this date
July 1908

12

Township 18 S Range 66 W

- | Obs | |
|------|--|
| 8016 | intersected East boundary of the Township at East Corner to Sections 1 and 12 from which corner, run West on a true line between Sections 1 and 12. |
| | Variation 15° 00' East |
| 4008 | Set a Cedar Post 40 in long 3 in dia. $\frac{1}{4}$ cut on West Side 12 in in the ground with Chard Stake at foot in mound. 18 in high by 48 in at base fits 24 x 12 and 12 in for Quarter Section Corner. |
| 8016 | The Corner to Sections 1, 2, 11 and 12. |
| | Land Gull rolling Prairie Soil 2' tall grass good. |
| | North between Sections 1 and 2 on random line |

13

Township 18 S Range 66 W

- | Obs | |
|------|---|
| | Variation 15° 00' East |
| 4000 | Set Post for Temporary Quarter Section Corner. |
| 8023 | Intersected North boundary of the Township 16 miles East of the Corner to Sections 1 and 2 from which corner, run South 04° 00' 04° 06' true line between Sections 1 and 2. |
| 4023 | Set a Cedar Post 37 in long 3 in dia. $\frac{1}{4}$ cut on West Side 12 in in the ground with Chard Stake at foot in mound 18 in high by 57 in at the base fits 24 x 18 and 18 in for Quarter Section Corner. |
| 8023 | The Corner to Sections 1, 2, 11 and 12. |
| | Land rolling Prairie Soil 2' tall grass good. |

Township 18 S Range 66 W

This Township is about
7.8 miles Prairie, the timber is a
thicket growth of Hard Yellow Cedar
and Spruce with few Cottonwoods on Turkey
Creek, there is quite a large number
of cedars long and large enough for
one fence post each and quite a
large amount of fire wood
there is no living water except
Turkey Creek

There is a large amount of good
pasture and good shelter for
stock which will keep in good
order the year round upon the
nutricious grass

There is several ledges of
sand and lime rock suitable
for building purposes

It abounds in game such
as Deer antelope and some
birds Turkey

There is some thriving black
oak settled upon Turkey Creek

67

67

Township 18 S Range 66 W
List of Names

A List of the Names of Individuals
Employed to assist in running measuring
or Marking the Lines described
in the foregoing field notes of
Township 18 South of Range 66 West
of the 6th principal Meridian
showing the respective locations
in which they acted

William Lawrence Chairman
Langwell Best Chairman
Lewis Kottman Flagman
Douglas McNamee Foreman

We hereby certify that the above
J. B. McNamee Deputy Surveyor in Surveying
and subdividing Township number 18 South
of the 6th principal Meridian and that said Township has
been all done to the best of our knowledge and belief William
Deputy Surveyor and the Surveyor William Kottman
located according to their return Signed at St. Louis
witnessed by the Surveyor Lewis Kottman Flagman
General
Douglas McNamee a member
of the Surveyor General's Office before me this 24 day of Nov 1873.

Township 18 S. Range 66 W

I Titus C. McNamee Deputy Surveyor
do solemnly swear that in pursuance
of a contract with Wth Leary
Survey General of the Public Lands
of the United States in the Territory
of Colorado bearing date 25 day
of ^{July} August 1873 and in strict con-
formity to the Laws of the United States
and the Instructions furnished
by the said Surveyor General I have
faithfully surveyed the entire
lines and subdivisions of Township
Number 18 South of Range 66
West of the 6th Principal Meridian
in the aforesaid Territory of Colorado
and do further solemnly swear
that the foregoing are the true and
original field notes of such
Survey

Titus C. McNamee

Township 18 S. Range 66 W

Subscribed and sworn to before
me this 24th day of Nov^r 1873
James Macdonald
Notary Public

Chris

70

Denver, C. T., Jan, 16th 1874

executed by

approved.

[Signature]

Surveyor General of Colorado.

Surveyor General of Colorado